

Actual4Dump



Choose the version that fits your needs	PDF Version	Desktop Test Engine	Online Test Engine
Latest and Up-to-Date exam dumps with real exam questions answers.	✓	✓	✓
Get 12-Months free updates without any extra charges.	✓	✓	✓
Experience same exam environment before appearing in the certification exam.	✗	✓	✓
100% exam passing guarante in the first attempt.	✓	✓	✓
20% discount on more than one license and 30% discount on 5+ license purchases.	✗	✓	✓
100% secure purchase on SSL.	✓	✓	✓
Completely private purchase without sharing your personal info with anyone.	✓	✓	✓

<http://www.actual4dump.com>

Superb Exam Dumps Materials lead you to get your certification easily - Actual4dump

Exam : **4A0-C04**

Title : Nokia NRS II Composite Exam:
OSPF version

Vendor : Nokia

Version : DEMO

NO.1 A router in AS 65100 receives three routes for 138.120.0.0/16. The first route has an AS Path of 65200 65400

65300 and a local preference of 150. The second route has an AS Path of 65200 65300 and a local preference of 100. The third route has an AS Path of 65600 65300 and a local preference of 100. Which route will appear in the RIB-out?

- A. Only the first route will appear in the RIB-Out.
- B. Only the second route will appear in the RIB-Out.
- C. Only the third route will appear in the RIB-Out.
- D. All routes will appear in the RIB-Out.

Answer: A

NO.2 An LSP is configured with one-to-one FRR and node protection on a Nokia 7750 SR. Which of the following is FALSE?

- A. Each PLR signals a protection tunnel that avoids the downstream node.
- B. A single protection tunnel can protect all LSPs that go through the same hop.
- C. Protection tunnels used in this LSP are also detour tunnels.
- D. A link protection tunnel is signaled if a node protection tunnel cannot be established.

Answer: B

NO.3 What is the source IP address in an OSPF update?

- A. 224.0.0.5
- B. The unicast IP address of the interface the update is sent on
- C. 224.0.0.6
- D. The system address of the router.

Answer: B

NO.4 Click on the exhibit.

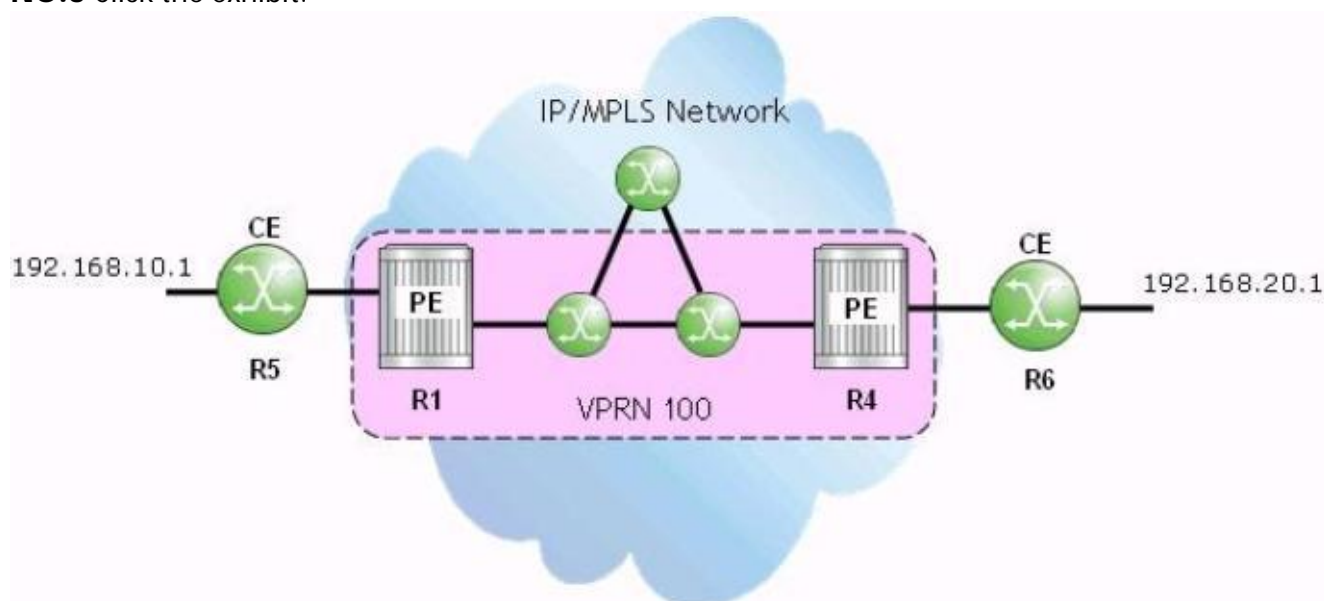
```
lsp "LSP-toR6"  
  to 10.10.10.6  
  cspf  
  primary "Primary_Path"  
  exit  
  secondary "Secondary_Path-1"  
  exit  
  secondary "Secondary_Path-2"  
  exit  
  secondary "Secondary_Path-3"  
    standby  
    path-preference 10  
  exit  
  secondary "Secondary_Path-4"  
    standby  
    path-preference 20  
  exit  
  no shutdown
```

If the primary path goes down, which secondary LSP path will the head-end router select first?

- A. Secondary_Path-1
- B. Secondary_Path-2
- C. Secondary_Path-4
- D. Secondary_Path-3

Answer: D

NO.5 Click the exhibit.



The CEs use BGP and export policies to advertise their local prefixes with the VPRN on their PEs. If the VPRN is functioning properly, which of the following commands will succeed when performed on router R1?

- A. "oam vprn-ping 100 source 192.168.10.1 destination 192.168.20.1"
- B. "oam vprn-ping 100 source 192.168.20.1 destination 192.168.10.1"
- C. "ping 192.168.20.1"
- D. "ping 10.10.10.6" (router R6's system IP)

Answer: A

NO.6 A BGP session is in OpenConfirm state. Which of the following messages must be received to transition to Established state?

- A. Open
- B. Keepalive
- C. Notification
- D. Update

Answer: B

NO.7 Fill in the blanks: A _____ device has all interfaces inside the provider domain, and a _____ device has at least one interface outside the provider domain.

- A. CE, P
- B. PE, CE
- C. PE, P
- D. CE, PE
- E. P, PE

Answer: E

NO.8 A network consists of four PE routers. A customer requires a VPLS and has sites connected to each PE. The VPLS is fully meshed using IP/MPLS. How many SDPs must be configured on each PE?

- A. 8
- B. 6
- C. 4
- D. 3

Answer: D

NO.9 Which of the following about ADSPEC is FALSE?

- A. ADSPEC sets an SDP's MTU to the smallest MTU value found along the LSP path.
- B. RSVP must be enabled on all MPLS routers of a path to use ADSPEC.
- C. ADSPEC can automatically adjust the service MTU.
- D. ADSPEC can be enabled on individual LSPs.

Answer: C

NO.10 What happens by default on an Nokia 7750 SR when a VPLS accepts a tagged frame at the ingress SAP 1/1/1:100?

- A. The FCS is verified and kept in the customer frame. The VLAN tag is removed for transport over the network.

- B.** The FCS is verified and removed from the frame. The VLAN tag is removed for transport over the network.
- C.** The FCS is verified and removed from the frame. The VLAN tag is kept for transport over the network.
- D.** The FCS is verified and kept in the customer frame. The VLAN tag is kept and transported over the network.

Answer: B

NO.11 Which of the following statements regarding route reflectors is TRUE?

- A.** Route reflectors do not work in conjunction with confederations.
- B.** Route reflectors disable iBGP split horizon for all iBGP peers in the AS.
- C.** Route reflectors require "n" iBGP sessions, where "n" is the number of BGP routers in the AS.
- D.** Route reflectors propagate BGP learned routes to their clients.

Answer: D

NO.12 What is the default preference value for a static route in the Nokia 7750 SR router?

- A.** 10
- B.** 15
- C.** 5
- D.** 0

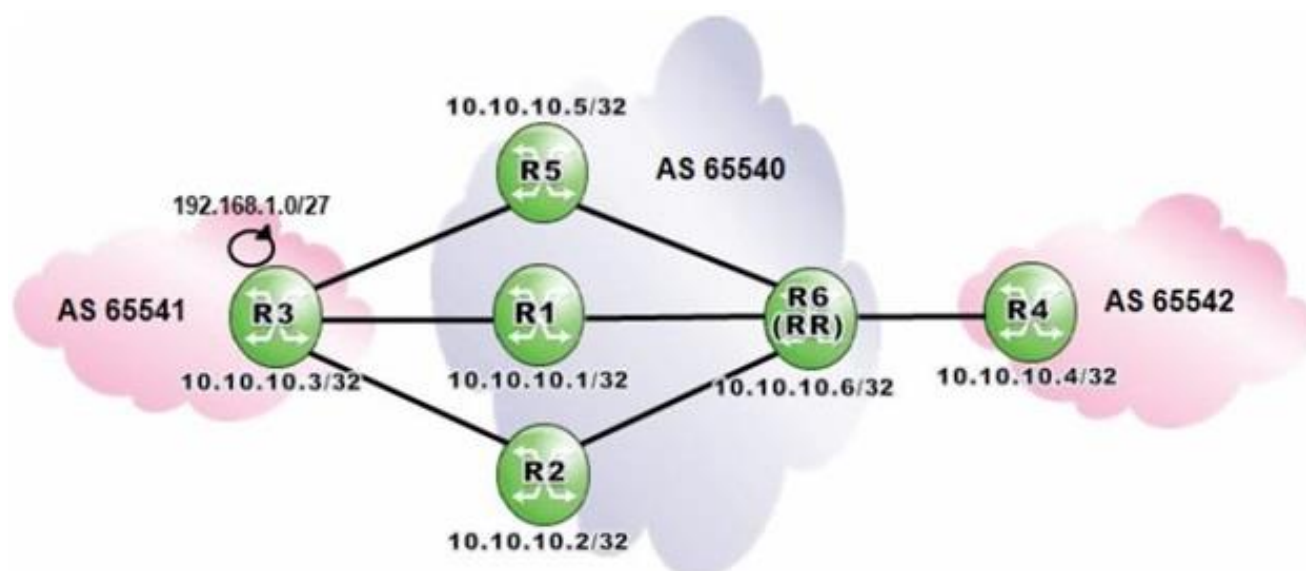
Answer: C

NO.13 From what range are 16-bit private AS numbers selected?

- A.** 64513-65535
- B.** 64496 - 64511
- C.** 1 - 56319
- D.** There are no defined private AS numbers; there are only private IP addresses.
- E.** 64512-65534

Answer: E

NO.14 Click the exhibit.



Router R6 is a route reflector with clients R1, R2 and R5. Router R3 advertises the prefix 192.168.1.0/27 to routers R1, R2 and R5. How many routes for prefix 192.168.1.0/27 will router R6 receive?

- A. None
- B. 2
- C. 3
- D. 1

Answer: C

NO.15 A static route is created using the command "static-route 0.0.0.0/0 next-hop 3.3.3.1". What command could be used to test the static route on an Nokia 7750 SR?

- A. Ping static 3.3.3.1
- B. Ping 3.3.3.1
- C. Ping 0.0.0.0
- D. Ping static 0.0.0.0/0

Answer: B

NO.16 Which of the following defines an FEC in traditional IP?

- A. A group of packets that leave the router on the same interface.
- B. A group of packets that will be forwarded by the router in the same manner, over the same path.
- C. A group of packets that arrive at the router on the same interface,
- D. A group of packets that arrive at the router on the same interface, from the same source.

Answer: B

NO.17 Which of the following LSA types stay within an OSPF area, and are not flooded outside of the area? Choose two answers.

- A. Router LSA
- B. Type 5 (AS external) LSAs
- C. Network LSA
- C Summary network LSA

D. Summary router LSA

Answer: A,C

NO.18 On Nokia 7750 SR OS, routing information between the CE and PE can be exchanged using the following methods.

A. ISIS, RIP, OSPF, static routes, OSPF3

B. ISIS, RIP, OSPF, static routes

C. BGP, RIP, OSPF, static routes, OSPF3

D. BGP, ISIS, RIP, OSPF, static routes

Answer: C